

Saxonwell Group

Parish News

July 26



50p where sold



[saxonwellchurches](https://www.facebook.com/saxonwellchurches)

www.saxonwellchurches.org.uk

The Saxonwell Group Parish News (SGPN) magazine is distributed to every household in Allington (Red), Foston (Green), Long Bennington (Blue) and Sedgebrook (Yellow).

West Loveden Monthly Services Pattern

Sunday 5th		
Allington	10.00	Holy Communion
Claypole	10.30	Holy Communion
L B	10.30	Morning Worship with Methodist Guests
Sunday 12th		
L B	10.30	Holy Communion
Stubton	6.00pm	Evening Holy Communion
Sunday 19th		
Claypole	10.30	Holy Communion
L B	10.30	Morning Worship
Foston	3.00pm	Holy Communion
Allington	10.00	Morning Worship or HC - TBC
Sunday 26th		
L B	10.30	Holy Communion
Allington	3.00pm	St James Churchyard Service

The above services are for everyone living in our parish of West Loveden. This includes Dry Doddington, Stubton, Fenton, Westborough, Sedgebrook, Foston, Allington, Claypole and Long Bennington.

Everybody is welcome to any of the services and we encourage you to attend services in other villages if there isn't a service in your church. Please join us for worship & fellowship (tea, coffee & biscuits included!!) If you know of neighbours who are without transport, kindly offer a lift too!

Please go to link below to see previous issues of the magazine:

<https://www.saxonwellchurches.org.uk/>

Contacts for the Magazine

Advertising , Counting and Distribution Manager
 Joy Jordan- joy.g.jordan@icloud.com / 01400 281355
 Treasurer - Stephen Peck – tel: 07831 545462
 email: Stephen.peckmain@gmail.com

EMAIL ADDRESS FOR ARTICLES:

Sgnmag23@gmail.com

Copy Deadline for the Aug/Sep'26 issue is 12 July 2026 at 5pm

Join a Local Church Service on Zoom

Compline each Thursday at 7.15pm.

Log in using:- Meeting ID: 810 6571 1379 Passcode: 744328

[https://us02web.zoom.us/j/81065711379?](https://us02web.zoom.us/j/81065711379?pwd=djBjbHZuc2UwSjRmUEZEMEx1dlhQUT09)

[pwd=djBjbHZuc2UwSjRmUEZEMEx1dlhQUT09](https://us02web.zoom.us/j/81065711379?pwd=djBjbHZuc2UwSjRmUEZEMEx1dlhQUT09)

ADVERTISING - IN THE PARISH MAG

Full page colour £52

Half page b/w £28

Full page b/w £43

Quarter page colour £22

Half page colour £35

Quarter page b/w £18

Eighth page colour £16

Donations to Magazine

The magazine is produced mainly by volunteers and is paid for from adverts and donations. If you would like to donate, you can use any of the methods below:

Bank Transfer to SGPN, sort code 60-09-09 account 72118695

Cheque to SGPN posted to SGPN Treasurer, Mr Stephen Peck, 81 Main Road, Long Bennington, NG23 5DJ

Hand to any church or PCC member



PAUL BERRY CHIMNEY SWEEP

N.A.C.S Registered

Wide area covered - Fully experienced in
all types of solid fuel appliances.

Chimney pots and bird guards. A complete service
from fireplace to chimney pot.

**ASHBROOK - THE PADDOCKS
LONG BENNINGTON, NEWARK, NOTTS**

Tel: 01400 282778

IB LANDSCAPING

SPECIALISTS IN DRIVEWAY CONSTRUCTION

TRANSFORM YOUR DRIVEWAY

✓ DURABLE ✓ STYLISH ✓ BUILT TO LAST



CALL NOW FOR A
FREE QUOTE

5.0 ★★★★★

Google Reviews

TRUSTATRADER
APPROVED BUSINESS



OUR DRIVEWAY SOLUTIONS



BLOCK PAVING

Stylish designs
built to last



RESIN BOUND

Smooth, modern
& low maintenance



TARMAC

Cost-effective
& durable



GRAVEL

Fast, affordable
& practical



5.0 STAR RATING
On Google



FULLY INSURED
For your peace
of mind



**100+ COMPLETED
PROJECTS**



QUALITY WORK
Workmanship
guaranteed



**PROUDLY SERVING
NOTTINGHAMSHIRE AND LINCOLNSHIRE**
Local, reliable & committed to quality.



**LIMITED SLOTS
THIS MONTH!**

GET YOUR
**FREE QUOTE
TODAY!**



07388 904560

CALL OR **WHATSAPP**



iblandscaping.co.uk

info@iblandscaping.co.uk

[IB Landscaping](https://www.facebook.com/IBLandscaping)

TURN YOUR IDEAS INTO REALITY!

QUALITY WORKMANSHIP
BUILT TO LAST



RELIABLE



PROFESSIONAL



TRUSTED



EXPERTS IN PAVING, PATIOS, TURFING & LANDSCAPING



PAVING & PATHS

Beautiful paving solutions to enhance your outdoor space.



ARTIFICIAL TURF

Low maintenance, all year round green and beautiful.



FENCING

Strong, durable fencing for privacy and peace of mind.



TURFING

Fresh turf laid to perfection for a lush finish.



MANY STYLES
& SAMPLES
AVAILABLE



BLOCK PAVING



TARMAC



GRAVEL



PATIOS



FENCING



ARTIFICIAL TURF



FULLY INSURED
For your total peace of mind



QUALITY GUARANTEED
We take pride in every project



LOCAL & RELIABLE
Trusted by homeowners across your local area



FREE QUOTATION
No obligation, just great advice

iB LANDSCAPING

THE TEAM YOU CAN TRUST!



GET YOUR FREE QUOTE TODAY!
CALL US NOW
07388 904560



WHATSAPP AVAILABLE

SCAN ME
TO SEE MORE
OF OUR WORK



COMPETITIVE PRICES EXPERT WORKMANSHIP BUILT TO LAST 100% CUSTOMER SATISFACTION

What is Rotary all about?



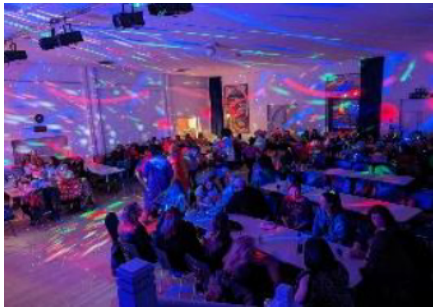
FIND OUT

Long Bennington Rotary meets in the village. Its members do not have to live in the village and its activities are not limited to the village, but its name has to have a geographic location.

Rotary has 1.2 million members across the world but its heart beats in the clubs or Rotaries that meet, in our case, every two weeks for an hour or so.



We started with a modest garden party. Our latest is our fabulous PARTY IN THE PARK!!! You have enjoyed our grand tea party for the late Queen's jubilee, and your annual visit from friend Santa in Foston, Allington as well as LB. Every now and then we have also opened up a Disco or two and hosted Bingo nights. All of our local Primary Schools have had Rotary visits to tell the girls and boys about the scourge of Polio and every village now has a planting of purple crocus flowers to symbolise the vaccinations that now have polio down to only two countries worldwide. We have supported two hospices, child bereavement, our air ambulance, local causes and organisations.



How do we do it? With energy, friendship and fun. No Rotarian is demanded to do anything. We work together with our skills and the time that we can spare to achieve improvements to the globe we live on. What we need is people with good will who bring their own skills, knowledge, vision and combine them with likeminded folk. To do more we need more Rotarians. We need all sorts of new ideas and basic talents – clerical, financial, digital, lifting and carrying, bar work (our constant fund raiser in LB Village Hall) as well as listening, doing and speaking. What is your passion? Your interest? Your strength? Young and mature, female and male - make a real and lasting difference. LB Rotary has members of diverse backgrounds and ages. We have tidied village hall grounds and church gardens as well as helped young girls in Gambia to attend school for a full week. Start local, and the skies the limit – if you can swell our numbers. You may be new to your village, have youngsters going to Uni, be nearing or at retirement, or maybe you are looking for some stimulating venture. We will give you a friendly welcome to come and find out if we are for you and vice versa.

HELLO@LBROTARY.CO.UK - find the answers. Contact us NOW.



Bloom Bike

Hand tied bouquets
Coming to a village hall near you

Thursdays

Norwell 10am- 12pm
Butchers brew Sutton on trent 1pm-3pm

Fridays

Stubton 9.30am -10.30am
Long Bennington- sixty two coffee shop 11am -1pm

Saturdays

Fernwood 10am -12pm

Gelston Lamb pop up farmers market
Last Saturday of every month

Follow / message on Instagram- [bike.bloom](#)



DREW GROUNDWORKS AND PAVING CONTRACTOR

(Long Bennington)

ALL ASPECTS OF GROUNDWORKS UNDERTAKEN

INCLUDING
BLOCK PAVING AND SLABBING
DRIVEWAYS AND PATIOS
SHED BASES
FENCING AND LANDSCAPING

All work undertaken to customer requirements
Telephone: 078100 16682 OR 01400 281409

ALLINGTON VILLAGE HALL REGULAR DATES FOR YOUR DIARY

Craft Afternoon: Monday 1.30-4.00pm. Includes quilting, model-making, cross-stitching, knitting, sewing, card making etc.

Pilates: Monday 7.00-8.00pm (Term time and requires pre-booking)

Tai Chi: Tuesday 10.00-11.00am. To reserve a place email: rebtpeacock@gmail.com

New Age Kurling: Tuesday 2.00-4.30pm

Viking Squares: Tuesday 7.00-10.00pm. Come and try Social Square Dancing – beginners welcome.

Mindful Movers: Wednesday 10.00am (1-3 years)

Baby Beats: Wednesday 11.15am (Newborn to crawling)

Keep Moving: Thursday 11.30am-12.30pm. Dance fitness class aimed at over 55s.

Hatha Yoga: Thursday 7.15-8.15

Yoga: Friday 10.00-11.00am (Closed through July and August)

Social Afternoon: Friday 2.00-4.30pm. Open to all for conversation and games.

Church Coffee & Cake: Monday 10.00am-12 noon (Monthly)

Allington WI: First Wednesday of the month, 7.30 for 7.45pm start. Visitors always welcome – £5.

Sound Bath: 3rd Saturday 10.30-11.30am (See www.bookwhen.com/shola or just turn up.)

Carpet Bowls: Alternate Sundays 2.00-5.00pm (September – April)

For further details on the above contact David Smedley on chair.allingtonvhmc@gmail.com.

For Viking Squares contact Judy Grummitt on 01400 281497.

SATURDAY 4th JULY AND SATURDAY 25th JULY

BIG BRUNCH: 9.30am-12 noon, last orders 11.00am. Drinks and Cake only will be served between 11.00am and 12 noon. Menu consists of a full English breakfast, with bacon, sausage, hash brown, fried egg, grilled tomato and beans. (Optional black pudding.) Or if you're extra hungry you can order a large breakfast. Side order of toast and marmalade/jam also on the menu. Tea/coffee and orange will also be served along with a variety of cakes. A £3 deposit is required for special dietary orders so please message Jackie in advance to order a special diet, on eventsatallingtonvillagehall@gmail.com.

VIEW FROM THE PEW - HOLY TRINITY CHURCH ALLINGTON

The Church is now open every day from 10-4pm until the Autumn.

COFFEE AND CAKE: Our Coffee and Cake mornings will be held on Monday 6th July and Monday 3rd August from 10-12 in the village hall. We look forward to seeing you all there for coffee, cake and a chat. Thank you all for your support and an ENORMOUS thank you to Marian and Margaret for continuing to run these mornings and to everyone who helps in whatever capacity.

THE PUDDING CLUB: The first Pudding Club was held at the village hall on 17th May and was very successful. Golden Sponge Pudding along with Bread and Butter Pudding were the most popular which was a surprise. With such a varied selection of puddings along with creamy custard and cream washed down with tea or coffee residents came back for seconds. Thanks for the help and support from Dave and Chris Smedley from the village hall and many others who without them the event could not have been such a success. The next Pudding Club is planned for 22nd November. Please put the date in your diary. Thank you everyone for supporting our village church.

CHURCHYARD



We had a great tidy up session on Saturday 13th June. Thank you to everyone who turned out to help. We are very grateful to all our volunteers. Coffee, tea biscuits and great conversation halfway through really made the morning fly by.

Apologies we didn't make it plain that we need you to provide your own gloves and tools – we are unable to do so because of Health and Safety.

The next clean-up will be in October in time to put all the trimmings on the village bonfire. Please keep an eye on Facebook etc for the date.

SERVICES

Our next services will be:-

Sunday 5th July – 10.00 – Communion – Rev Jon

Sunday 19th July – 10.00 – Morning Worship or communion tbc

Sunday 26th July – 3pm - Our Annual St James' Churchyard service – see posters and Facebook for more information.

We have purchased 50 new hymn books as the ones we had were showing signs of age. If you would like to sponsor a hymn book we will put your dedication in the front of the book. Donations will be gratefully received. The old hymn books will not be thrown away they will be stored carefully and used as and when we need them.

CLIFFORD
Heating Limited

Your Home Heating Specialist

- AGA & RAYBURN Range Cooker Specialist.
- Oil, Gas and Solid Fuel heating engineers.
- Fully fitted central heating systems.
- Boiler breakdown experts.
- Reconditioned AGA's inc. 13 amp electric.
- Monthly service plans from as little as £12 per month

T. 01777 872391
Online at www.cliffordheating.co.uk

AGA HETAS RAYBURN

Kenneth Moore R.A.F. You'll Fly Laughing – Part 1

On Wednesday, 3rd June, we were joined by Kenneth Moore, who was an Ex-R.A.F. navigator for 34 years.

He now, amusingly, talks about the technicalities of fighter planes, their crews and in general about the banter and antics of the various squadrons he has flown with. He showed slides and videos of the Phantom F4 (J) and of the Tornado F3. He flew Phantoms in the Falkland's, and his squadron motto was I FEAR NO MAN. Since retiring he has enjoyed being a tour guide and also worked on cruise ships.

Allington WI members and visitors enjoyed a hilarious evening, listening to all the funny stories throughout his career and we are now looking forward to Part 2.

If you want a laugh, we would highly recommend that you book an evening with Kenneth Moore – You'll Fly Laughing – Part 1.

Future Meetings

DATE 2026	SPEAKER / EVENT
Wednesday, 1 st July	Sharon Hall, Fraud Protect Officer – Crime Prevention – Cyber Awareness
August	No Meeting – Summer Meal/ Tea and Cake at 2.00 pm - Members only
Wednesday, 2 nd September	Sue Stennett – An Orphan in Lincoln – comparing different ways of life for children in care around the 1900
Wednesday, 7 th October	June Mullins – Aloe Vera – History and uses of Aloe Vera
Wednesday, 4 th November	Members' Night – Members only
Wednesday, 9 th December	Christmas Party – Members only
2027	
January	No Meeting
Wednesday, 3 rd February	Wendy Fowler – Nursing in the East End during the 1980s and present-day nursing
Wednesday, 3 rd March	Annual Meeting, followed by light entertainment – Members only
Wednesday, 7 th April	Liz Bailey – Spring Flower Arrangement

Allington WI - still collecting empty blister packs

There is a bin in the Village Hall Post Office and one in the serving area where anyone can put their empty blister packs, but please ensure that they are completely empty – as pills have recently been found, again, in the blister packs.

Recycling Stamps And Used Printer Cartridges

Used postage stamps are collected for the Royal National Institute for the Blind (RNIB).

Used printer cartridges, of all types, are recycled to raise money for the David School in Sierra Leone, with the motto 'Education Changes Lives', to provide education for children where there was no school.

For further information email allingtonwi@gmail.com

COVID
SECURE



EXCELLENCE IN
KITCHENS AND BATHROOMS

CHEFS DELIGHT KITCHEN BATHING BEAUTY BATHROOM

If you are looking for a beautiful bathroom or kitchen then look no further, I am the man to give you the "WOW" factor that you desire. With an excellent eye for detail, I offer the complete design and fitting service including, plumbing, tiling and decor to give you that dream look, exceeding your expectations.

TRUSTED AND EXPERIENCED
WITH YEARS OF SATISFIED
CUSTOMERS.
REFERENCES AVAILABLE

FULLY
INSURED AND
AT YOUR
SERVICE!

Phone/Text Stuart on 07444 896 982 or
Louise on 07387 280 377

Email kit.bath.fitter@gmail.com
www.excellenceinkitchensandbathrooms.co.uk

FOSTON - DATES FOR YOUR DIARY

Foston Parish Council

Meet in the Village Hall on alternate months. A 15-minute period is set aside at the beginning of each meeting from 7.30 – 7.45pm, please note the meeting will commence at 7.30pm if no residents are present. Confirm with Christina Lees on 01400 281309.

Uniform Groups Meet at the Village Hall

1st Foston Brownies Thursdays 6.30pm - term time only.

Register interest via www.girlguiding.org.uk

Rainbows Thursday 5.00-6.00pm

Church Coffee Mornings. 10am-11.30am on the first Wednesday of the month

Foston Coffee Morning 10am-12noon on the third Wednesday of the month

Foston Neighbours

Foston Neighbours are here to lend a hand – if you need any assistance with lifts to appointments, shopping or other domestic issues, we will do what we can to help, or signpost you to other services that may be right for you.

ST PETER'S FOSTON – NEWS FROM THE PEWS

Services at St Peter's

Here are our Services over the next couple of months for your diary:

19th July, 3pm, Holy Communion

16th August, 3pm, Holy Communion

20th September, 3pm, Harvest Service

Many other Services take place across the Group throughout the month – look at the schedule at the beginning of the magazine for all services available. Holy Communion is also available at Long Bennington on the 2nd and 4th Sundays of the month, so we hope congregations will visit other churches.

The Church remains open to all, twice a week for private prayer on Wednesday (1-4 pm) and Sunday (9.30 am - 1pm). Please feel free to use the church for quiet contemplation and prayer



New Treasurer is needed

Our Treasurer has stepped down after over 8 years in the post so we are seeking a new spreadsheet guru to take over! You don't have to be on the PCC to fulfil this role – just be good with numbers, can work excel and have a couple of hours a month. If you are interested, please contact Lucy Bliss (contact details below).

'Remember Me' is blooming!

The rosebush the village planted in March has started growing and blooming! It was planted to remember those affected by the pandemic and reflect on our shared experience as a community.



June saw St Peter's sparkling for a wedding! Thank you to all those who helped prepare the church for this special day – it's beauty shone through. And our congratulations go to the special couple, Rachel and Neil – we wish you the very best for your married life together!

Upcoming Events



Heritage Open Day – The national event runs from 11th-20th September and Foston will host an open day on Saturday, 12th September. Last year this coincided with a village-wide Yard Sale and we will be gauging interest to do the same this year.

Our Harvest Service takes place on Sunday 20th September at 3pm, followed by the Harvest Supper on Monday 21st September at 7pm.





Coffee Morning: Come and join us for chat and homemade cake on the first Wednesday of the month. So many have been attending recently so it is clearly the place to be! Just £2.50 for all this... At the Village Hall from 10-11.30am on the following dates:

Next dates: 1st July 5th August 2nd September

Book Swap: Lots of books currently available so feel free to browse the books in the church porch, with more inside! Please take as many as you like as there are so many there! Peruse the inside shelves when the Church is open either Sunday mornings (9.30am-1pm) or Wednesday afternoons (1-4pm).



Regular Giving

Money makes the world go round And it certainly helps to keep the Church well maintained. Only a small proportion of our finances go to the Diocese to cover the cost of our Parish Vicar. The remainder is used to keep the Church standing, safe and open for all. If you would like to support St Peter's Church, you can set up either regular giving or one-off donations through the following website:



www.paritygiving.org.uk and search for Foston St Peter. Alternatively use this QR code: And thank you to those who do give regularly already!



Look out for unwanted phishing emails! No one from the Church will email you asking for urgent help or finances. If you receive any emails which appear false or a scam, please report them to Action Fraud but do not click on any links or reply to them. We are aware some are around so we urge you to be alert.

For more details for anything listed here, please contact either Eileen Ross (tel 07710 534732) or Lucy Bliss (mobile 07740 980689, email lucyjanebliss@gmail.com).

Would you like to light up St Peter's Church, Foston?

In someone's memory, for a celebration or just as a welcome home!

Contact Lucy Bliss to book 07740 980689
£8 for the evening (usually 7-10pm but might
change according to time of year)



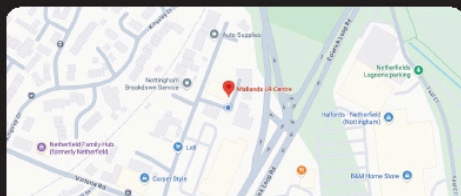
LAND ROVER SERVICE CENTRE

ACCESSORIES & STYLING

MIDLANDS
LR CENTRE



BRING THIS PAGE FOR 10% OFF *



Next to Lidl, Netherfield

MAIN DEALER SERVICE AT A FRACTION OF THE COST

Our expert technicians care for your vehicle using genuine OEM parts and keep your online service history up to date. While you're here, explore our wide selection of vehicle enhancements and upgrades!



SERVICING

- Genuine Land Rover Parts
- Updated Online History
- Land Rover Approved
- Routine Servicing
- Major Servicing
- Vehicle Maintenance Repairs

ENHANCEMENTS

- Rear Seat Conversions
- URBAN Approved Installer
- Body Kits & Styling
- Alloy Wheel Upgrades
- Rear Screen Entertainment
- Vinyl Wrapping

SECURITY

- Ghost Immobilisers
- GPS Vehicle Trackers
- Halo Dash Cams



10 Great Northern Way,
Nottingham,
NG4 2HD



T: 01156 488 538



sales@lrcentre.co.uk

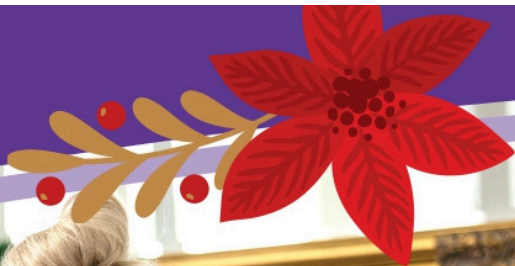
midlandslrcentre.co.uk

*T&Cs apply see website



Country Court

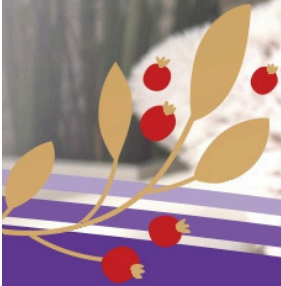
Our family, caring for yours



Neale Court Care Home

Residential, Dementia, Respite Care

Our home has been refurbished and extended, whilst still retaining a warm family atmosphere. It has been thoughtfully designed with our residents' comfort and independence in mind.



Join us

for our Coffee Mornings with a selection of delicious cakes, tea and coffee every Last Wednesday of the month 10.30am - 11.30am.

Enquire today

01522 682 201

Neale Road, North Hykeham, Lincs, LN6 9UA
www.countrycourtcare.com





14th May – 3 of our members attended a Willow Weaving workshop, at the Sleaford Head Office, where Louise showed them how to weave butterflies. It was a thoroughly enjoyable experience and they look forward to making an Angel in November.

2nd June – Some members had an amazing day, at Burghley House, Stamford, a premier filming location, including The De Vinci Code. The guides were wonderful and the gardens and scenery spectacular, with an over 1000 year old Oak. Well worth a full day visit, luckily it was sunny!

4th June – We thanked Carole for hosting the 2026 NFWI (National Federation of Women's Institutes) Annual Meeting again and for making us all so welcome. The table was beautifully decorated and a tasty lunch was served, provided by everyone. The broadcast meeting was most enlightening, with Guest speakers:
Anne Boden (CEO of Starling Bank) Free to us.

Professor Michele Dougherty (Lead Scientist for the JUICE mission).

Mary Lewis Major Space Projects

Additional expert speakers in support of the annual resolutions included Raymond Martin from the British Toilet Association and Crisis leadership for women's.

Christie Booth NFWI Trustee, Dignity, Health & Inclusion



9th June – Stephen Jon Cooper, a professional Mask, Puppet Maker, Educator and Performer, was our speaker for this month’s meeting.

He gave us an entertaining display, while wearing each mask and explaining where they originated came from, around the world,.

Forthcoming events:

27th June - Summer Fete, Foston Village Hall, 1pm – 5pm

14th July - Visit to Framework Knitting Museum, Ruddington

For further information - contact Eileen Ross 07710 534732

Maggi Challis Publicity

Steve Smith Window Cleaning
WINDOW CLEANING AND GUTTER CLEARING

- Professional Window Cleaning
- Gutter Vac Clearing
No Ladders, No Mess
- Residential & Commercial
- Fully Insured



Blocked Gutters Cause Damp & Damage – Don't Leave It Too Late!

**Call or Text Steve:
0776 2815826**

[✉ stevesmithwindowcleaning@hotmail.com](mailto:stevesmithwindowcleaning@hotmail.com)

Free Quotes • Reliable Local Service

LONG BENNINGTON MEDICAL CENTRE

Wellbeing Walks – Continue in 2026

Our free Wellbeing Walks take place on the 1st Wednesday of every month at 10:00am, starting and ending at the Medical Centre.

Both shorter walks and longer walks are available, so don't worry about your fitness level. There is a walk to suit everyone. After the walk, we host our members at the practice for a coffee catch-up. This gives everyone a chance to sit down, relax, and chat with others in a friendly environment. It is a great opportunity to meet new people, build social connections, and support overall wellbeing.

Please Keep Your Contact Details Up to Date

We kindly ask all patients to ensure that the contact details we hold for you are up to date.

This includes your mobile phone number, landline number and email address. Having the correct contact details helps the practice contact you about appointments, test results, reminders, health campaigns and other important information. Please let us know as soon as possible if any of your details change, by contacting our reception team.

Thank you for helping us keep our records accurate and ensuring we can contact you when needed.



LONG BENNINGTON
Medical Centre



01400 283 236
07957 347 777
cmurphyelectrics@outlook.com

MURPHY ELECTRICS

Local electrician based in Long Bennington.

- installation and re-wires
- maintenance and fault finding
- inspection and testing

Free estimates and all work certified to current IEE regulations.

Part-P registered.



Long Bennington – REGULAR DATES FOR YOUR DIARY

(Please also see Village Hall Schedule)

RiverCare Long Bennington: a group monitoring, managing & protecting the River Witham bordering the village meeting on the 4th Saturday of the month at 2pm to litter pick, clear vegetation, remove invasive species and monitor water quality. Please contact rivercarelongbennington@gmail.com

Mobile Library Service

Outside Long Bennington Village Hall Friday - 1330 – 1430 monthly
Enquiries to Customer Service Centre on 01522 782010 or www.lincolnshire.gov.uk

Tea-n-Chat

Started by St Swithun's church to provide a place for people to meet in warm, friendly surroundings. It is held in Long Bennington Village Hall on the last Friday of every month from 2.15 - 3.30pm. (except holiday breaks in August and December). Everyone is welcome, and tea, coffee and cakes are provided. Please feel free to join us.

Methodist Coffee Morning

Please join us every 3rd Saturday in the month, in the Methodist Chapel for coffee, cake and a chat.

The Chatty Café

Meeting every Thursday afternoon 2pm- 3pm in Baker's at Sixty-Two – Main Road, Long Bennington. The Scheme is a national initiative aiming to reduce loneliness by getting people chatting. The group is hosted by two Chatty Cafe Scheme volunteers each week. Contact Mary Barlow marybarlowhello@gmail.com or tel: 07885 639091

Long Bennington Afternoon House Group

Do you enjoy meeting other Christians to chat, discuss and pray?
We meet every other Monday at 2.15pm 76 Main Rd Long Bennington
For further details contact: Joy Jordan Email: joy.g.jordan@icloud.com: Tel: 01400 281355.

Book and Card/Gift Stall

Second Sunday each month there will be a stall in St Swithun's church, selling books, cards and small gifts, run by Helen Baker from Claypole. Come and have a look for that special card or an uplifting spiritual book and have a chat and coffee/biscuits around 11.30am to 12 noon (following the 10.30 service).

Long Bennington Pre-School

A registered charity offering a safe, stimulating and nurturing environment to educate your child. Qualified, experienced staff will support your child, learning through play, to reach their full potential. Based in Long Bennington Village Hall, we are open Monday to Friday 8.00am- 5.00pm during term time. Government funding is available to eligible families. Our payable rate is £6.00 an hour for any additional hours taken outside of funded hours.

For more information, or to arrange a visit please call 07816 537242 or email longbenningtonpreschool@googlemail.com

Long Bennington Village Hall Events Schedule July'26

When	Class/Meeting	Time	Hall	Contact
Mon weekly	Advanced Pilates	10.15	Main	Linda Brady 07850 618516
1 st Mon monthly	Parish Council	19:00	Small	01400 282716 parishclerk@longbenningtonparishcouncil.org
Tues weekly	Bennington Art Group	10 –12	Foyer	Margaret Butcher 07484 140914 margaretbutcher98@gmail.com
1 st Tues monthly	WI	19:30 – 21	Main	Jan Leventhall Janleventhall@me.com
4 th Tue monthly	Gardening Club	19:30 – 21	Main	Amy Hodson amyhodson4@gmail.com
Weds wkly	Post Office	9 – 12	Foyer	
Thurs wkly	Post Office	13 – 15	Foyer	
Thurs weekly Not w/c 20/7 & 27/7	Adult Pilates Suitable for all levels	17:15 – 18:15 & 18:30 –19:30	Main	Amanda 07967387969 https://www.corestrengthpilatesuk.com
Fri wkly Not w/c 20/7 & 27/7	Adult Pilates - all levels	09:30 - 10:30	Main	Amanda, As Above
1 st & 3 rd Fri mthly	WI craft group	1030 - 12:30	Bar	Sue Clarke 01400 282986
Friday 31 st July	Strawberry Cream Tea	14:00 – 16:00	Main	Hilda Owen 01400 282471 ejanecowley@aol.com
Tuesday 21 st July	Wine Club	19.00- 21.30	Bar	Raj Solanki raj@libradrinks.co.uk
Sunday 5 th July & 2 nd August	Love to Dance - Frozen	15.00- 19.00	Main	sally.picker@hotmail.co.uk
Saturday 11 th July	History Talk 50 Glorious Years	19.30- 21.30	Main	Niz Smith Niz.l.smith@gmail.com
Wednesda y 15 th July	LB Academy School Performance	13.00- 20.00	All	Eleanor Baliol-Key eleanor.baliol-key@infinityacademies.co.uk
View all events and bookings online			https://www.longbenningtonvillagehall.org/bookings@longbenningtonvillagehall.org	

Are you recently retired and looking for a way stay active in the community ?

Do you have skills you'd like to put to good use ? The Long Bennington Village Hall Committee is seeking new volunteers to work alongside existing members.

This is a great opportunity to contribute your experience, stay engaged, and make a meaningful difference to our local facilities. If you're interested in getting involved, we'd love to hear from you.

Email bookings@longbenningtonvillagehall.org if you are interested and we'll come back to you.



Community Book Exchange

Foyer in Long Bennington village hall.

“Borrow or Swap a book”

Over 200 quality fiction, non-fiction, romance and biography books.

“Happy reading”

Open at Post Office times
Wed 9-12 and Thurs 1-3



LONG BENNINGTON NEWS FROM THE PEWS



Pop-Up Cinema



We were excited to host the first ever Pop-Up cinema at St Swithun's church on Saturday 6th June. Thank-you to all who supported this enjoyable event. A special thank-you also to South Kesteven District Council who were looking for venues in village locations back in December to host such event, and who we liaised with closely. Their Events Officer was a real pleasure to work with and, on the day, the Skylight mobile indoor cinema folks were too. They put up and dismantled the impressive screen so efficiently and the impact of it in the church added to the sense of occasion. We raised around £300 for church funds from the event, which was an added bonus!

Father's Day Event

By the time you are reading this, we will have held our Father's Day Event and hope that many children and their families enjoy the fun-packed morning at the Village Hall.

Events in July

On Sunday 5th July we will be welcoming the Methodist congregation for a joint Morning Worship service at St Swithun's Church.

Long Bennington Church of England Academy Year 6 Leavers' Service will be held on Wednesday 22nd July at 10am.

On Friday 31st July our regular Tea-n-Chat is replaced by a Strawberry Cream Tea from 2-4pm. There is a poster in this magazine – which highlights that as well as delicious refreshments there will be a raffle (with great prizes, including local experience vouchers) and cake stall - £5 entry and children are free.

Everyone is warmly welcome to come along to any of the above events as well as to the other church services which are listed at the front of the magazine.

Thank-you!

We would like to say a big thank-you to: Martin Wright for arranging for the tree branches that were overhanging the War Graves to be cut by the Council AND Tony Mills for deep cleaning the church path in the pouring rain, in readiness for the wedding on Saturday 13th June.



Strawberry Cream Tea

at St James' Village Hall, Long Bennington

Friday 31st July from 2-4pm

£5 entry for adults – children are free!

Raffle and Cake Stall

All are welcome!

In aid of St Swithun's church funds
and the church's supported local charities

Save the Date...



ST SWITHUN'S CHURCH

Harvest Supper

7.00 pm

Saturday 10th October

St James Village Hall, Long Bennington
home-cooked supper & harvest themed quiz
bar & raffle

Tickets £ 12.00

Available from:

BERYL HOLMES 01400 281437. MAUREEN PROTHERO 01400 281635
JEANNE DAY 01400 282873 JANE COWLEY 01400 282691
TEA N CHAT ST SWITHUN'S CHURCH PCC MEMBERS

ALL PROCEEDS TOWARDS CHURCH FUNDS

If you would like to make a donation to St Swithun's church, please use the QR code here or by online bank transfer to: Long Bennington Parochial Church Council Account Number: 501103570 Sort Code: 05-04-42





ALL TYPES OF TREE WORK

**CROWN REDUCTIONS, THINNINGS
AND CROWN LIFTING**

FELLING

STUMP GRINDING

SITE CLEARANCE

NPTC & LANTRA QUALIFIED

7 YEARS' EXPERIENCE

FULLY INSURED

BBQ CHARCOAL FOR SALE

KILN DRIED FIREWOOD FOR SALE

**For further details and quotes please contact
Richard Copley**

Mob: 07917 390987

Email: manorfarmtreeservices@mail.com

www.manorfarmts.co.uk

Facebook: [@ManorFarmTrees](https://www.facebook.com/ManorFarmTrees)

Instagram: [@manorfarmtr](https://www.instagram.com/manorfarmtr)

Tuesday, 2nd June, 2026 – Baby Basics

Our speaker this evening was Jennifer Winnington, a mother of 3, who along with her husband has fostered 110 babies for over 34 years. When she decided to “retire” at the age of 70 she found she missed the children and had time on her hands. After looking around to see where she could be of help, she came upon the Hope Community Methodist Church and through them discovered Baby Basics, who provide impoverished expectant mothers with all the basics they require for their new baby. Baby Basics was founded in 2009 when a Sheffield midwife alerted friends in her church of the grinding poverty some new mothers faced, often through no fault of their own. Baby Basics is a non-religious charity helping all faiths and none, and all charges and donations are run by the Church treasury. There are now 50 Baby Basics centres throughout Britain and every one of them is linked to a maternity unit, as this is their first contact. All units are independently funded but are under the umbrella of Baby Basics UK and strict guidelines are followed as to what can be provided. Referrals can only be accepted from certain charities, Social Services and midwives. To ensure the dignity of the new mothers, there is no contact with Baby Basics themselves, just the referrer.



Jennifer makes sure the mum is given a brand-new toiletry bag containing all the essentials for a stay, such as shampoo, toothbrush/paste etc. and a new bath towel. Also, it will contain baby bath and nappy cream.

Our local Baby Basics began in October 2024 and to date have had 141 referrals. Some items given are pre-loved, but many are bought new and if the basket has been donated, it always has a new mattress provided. Each basket is packed to the brim with everything a new baby needs – sheets, blankets, hats, mittens, outfits, vests, socks, nappies, wipes etc. and always a board book, cuddly toy and rattle. There is even a box of Heroes for mum and if the baby has a sibling, a small gift for them too. A card is enclosed saying, “Welcome to the world – you are unique”, love from Baby Basics.

This is a wonderful charity, treating women with such kindness and dignity. We all felt such sympathy and gratitude that people like Jennifer are there to make such a difference to the start of a new life.

Our next meeting will be held on 7th July, entitled Upcycled Clothing.

For more information about our friendly WI, please contact Jan Leventhall on 07803892118 or janleventhall@me.com
Elaine Walton – Publicity

The Parish Council had its last meeting on 1st June at St James's Hall.

We have been successful in obtaining a grant from Lincolnshire County Council to refurbish the Church Street Bus Shelter. The work is scheduled to take place in early July.

Following a recent defibrillator training session within the village, it has become clear that not everyone knows about the four defibrillators that the Parish Council provide in the village. Access codes for the defibrillators will be provided by 999 operators in the event of an emergency, but for reference we have them located at:-

- Village Hall
- Community Police Office next to the school
- Sports Pavilion
- Woods Close

Potholes and issues with the highways are a significant concern for residents. If you identify an issue, please record directly on FixMyStreet. This is the best way to alert LCC and SKDC of any highways/ pavement type issues. Whilst getting the issue resolved may take a little time, you will be kept updated on progress, including the initial inspection.

PARISH COUNCIL COMMUNICATIONS - the Parish Council continues to explore various methods to enhance its communication with residents and to encourage greater community engagement and interaction.

Get Connected!

Be part of the Long Bennington Parish Council Village Email List ...and never miss what's happening locally.

It's quick and free.

Scan the QR code or send an email to: community@longbenningtonparishcouncil.org with your name and preferred email.

Let's build a more connected, informed, vibrant village.



Your details are stored securely in line with data protection legislation. The Council welcomes and values all comments from residents. Please do not hesitate to share your thoughts and feedback regarding how communication and engagement can be further improved.

The next Parish Council meeting dates Monday 6th July and 3rd August.

As always, if you have any issues or concerns you wish to raise with the Parish Council, please contact the Parish Clerk on 01400 282716 or email parishclerk@longbenningtonparishcouncil.org



Tel: 01636 703756

WHISTLERS PHARMACY

Beaumont Chambers
1 London Road
Newark
NG24 1TN



We deal with
Long Bennington Surgery

Your local travel
health clinic

FREE DAILY HOME DELIVERY SERVICE

To Long Bennington, Claypole and
All Surrounding Areas

Your prescription ready for collection or delivery
within 48 hours of receipt from your surgery.



**YOUR LOCAL INDEPENDENT
PHARMACY**
YOUR LOCAL NHS
VACCINATION CENTRE



Largest Medicine Stockholding in Newark



E. GILL & SONS^{LTD}
Funeral Directors



'Our family caring for your family'

The Gill family are proud to have provided
care and advice to families in the
Newark and District Area for 100 years

We offer pre-paid funeral plans

55 Albert Street, Newark, NG24 4BQ
01636 677461



FOUR
SEASONS
FUTURE
PLANNING

FREE LEGAL WILL OFFER

Specialists in Lasting Powers
of Attorney and Protective Trusts

Call our office and book an appointment with **David Lee**
david@fourseasonsplans.com

Grantham • 01476 850045

The Old Maltings, Wharf Road, Grantham NG31 6BH



Local Locksmiths

No call out fee, DBS checked, 5* Reviews
24/7 Emergency Locksmiths

lockshaw7@hotmail.com
www.lockshaw.co.uk

Local reliable Locksmiths



Littlegates for Littlepeople
Children's Nursery and Kids Club

Purpose built nursery in a rural location.
Offering quality care for children aged
3 months to 11 years.

Fully qualified staff.
Open Monday to Friday 7.15am - 5.30pm.

Before and after school club at
Claypole School.

School holidays and non contact days
also catered for. Open for 50 weeks of
the year.

Funding available from 9 months.

01636 626067

littlegatesforlittlepeople@googlemail.com



Guild Commended Framer
Member of the Fine Art Trade Guild
Members of the Professional Picture Framers Association

Churchill Room, Balderton Hall
Fernwood Village, Newark on Trent
Nottinghamshire, NG24 3JR



t: 01636 921461
e: info@framinell.co.uk
www.framinell.co.uk



BESPOKE
FRAME MAKERS

MALCOLM FRYER PLUMBING & HEATING

- BATHROOMS / KITCHENS
- BOILER REPLACEMENTS
- CENTRAL HEATING
- ALL PLUMBING REPAIRS



Tel: 07860 267178

3 Main Road, Long Bennington, NG23 5EH.

JONIC BUILDING SERVICES Ltd.

jgwdawson.jbs@gmail.com

Local family serving Long Bennington & surrounding area for over 90 Years

-Newbuilds -Extensions-Conversions-Renovations-

-Landscaping-Repairs-Maintenance-

References available on request

Ring John Dawson for a free quotation or advice

TEL: 01400 282020

MOBILE: 07815 323708

36 Main Road Long Bennington NG23 5DJ

From the Methodist Chapel

Greetings, friends.

Once again, it is lovely to have the opportunity to share with you. I write this shortly after taking a retreat day, something I know is important but can still be tempted to avoid. Over recent weeks I have been finding that walking for around an hour a day, and taking on a few further challenges, has helped me keep a sense of perspective. That matters when caring for Long Bennington sits alongside the needs and opportunities of our wider circuit of churches.



Firstly, I want to say how wonderfully supported I feel, and what an excellent AGM we had as a chapel. It was good to gather, to reflect, and to continue asking what our purpose is. In one sense, that is easy to answer. We are here to show the love of Jesus in word and action. But we are also asking a more local question - what is our particular contribution to the life of Long Bennington? What do we already do well? What might we do better? How might we draw more people in?

On my retreat day, I found myself thinking about this while walking above Ladybower Reservoir in Derbyshire - up to Winhill Pike for those who know it. For a fairly modest investment of travelling time, you can be somewhere that feels completely different. This was the second in a series of more challenging walks with my son, who is very keen to climb Scafell Pike. I am perhaps not quite so keen, but I suspect the journey towards it will do me good.

Walking is teaching me a few things.

The first is that God is with us on the journey. The story of the road to Emmaus continues to speak to me this year. Jesus walks alongside two disciples who do not realise who he is until he breaks bread with them. Yet he has been with them all along. There is a deep comfort in that. We do not always recognise God's presence at the time, but that does not mean we are walking alone.

The second lesson is about pace. I come from a running background, where the aim is often to complete the distance as quickly as possible. Walking is different. Stopping is not failure. Rest is not weakness. Sometimes the task is simply to take the next step, and then the next. Sustainability matters. We are in this for the long term.

That is true in church life too. Some things we take up because they come naturally to us. Some things we take up for the sake of others. Some seasons are full of activity. Others require rest. All of them can be part of faithfulness.

I have also been reminded that companions on the journey matter. My son may walk ahead of me, and that is fine. He needs to make his own way. But we are still aware of one another. My wife may not be on the walk, but it still matters that she knows where we are and when we expect to return. Companionship does not always mean walking side by side every moment. It means knowing that we are held in mind, prayed for, and looked out for.

Finally, there is the summit - but also the descent. It is no good reaching the top if you have no strength left to come down safely. In Ephesians, Paul speaks of standing firm, and still being able to stand when the struggle is over. That feels important. Wisdom is not only having the courage to climb. It is also knowing when to pause, when to turn back, and when enough has been done for one day.

So, whatever journey you are taking, and whatever new challenges you are facing, may God be with you. May you walk at your own pace. May you take rest when you need it. May you value companions along the road, even when they are some way ahead or behind. May you reach the summit of what is before you - and may you also have the strength to come down in one piece!

It remains a privilege to be minister of Long Bennington Methodist Church as we continue to offer ourselves in service to God and to our community.

Every blessing

Langley

Rev Dr Langley Mackrell-Hey
Superintendent, Newark and Southwell Circuit of Churches
"In Jesus' name... encouraging, exciting and enabling churches to deepen faith, offer faith to all and transform communities."

Livestream 'Next Sunday Now', Mondays 830am

<https://www.youtube.com/@Rev-Langley>,

<https://www.facebook.com/langley.mackrellhey/>

Minister to Balderton, Charles Street, Hope Community, Long Bennington, and North End Methodist Churches. t:01636 702154 m 07525 762538

Rest day Friday

WHAT'S HAPPENING AT THE METHODIST CHAPEL?

Sunday Services

All services can be viewed on the notice board outside the Chapel.

All our services start at 10:30am unless otherwise notified. Everyone is welcome.

Knitting / Craft Group

Anyone interested in knitting, sewing, embroidery etc. would be very welcome to come along on a Monday morning from 10.30am to mid-day. There is a nominal entry fee of £2.50 to cover the heating costs and refreshments.

Games Afternoon

Are you looking for a little fun, come and join us on the 2nd and 4th Wednesday of each month when we get together to play board games and have tea (or coffee) and chat. We are always looking to welcome new participants so if you have a competitive streak we look forward to seeing you. There is a nominal entry fee of £2.50 to cover the heating costs and refreshments. Activities start at 2.00pm

Coffee Mornings

Our next Coffee Morning will be held on Saturday 18th July, starting at 10am so come along and join us when there will be homemade cakes for sale, a raffle and wonderful Nearly New Stall which is always full of exciting items and great gift opportunities. Entry costs £3.00 for bottomless tea or coffee and plenty of biscuits.

Food Bank - Grantham

Here at Long Bennington Methodist Chapel and in conjunction with other chapels in the local circuit, we support the work of The Trussell Trust and their Food Bank initiative to 'Stop UK Hunger'.

If you would like to make a donation of non-perishable, in-date food, please bring it along to any of our monthly coffee mornings and we will be pleased to make sure it gets to those in need in the Grantham area through the local Food Bank branch. If you still wish to donate to people in the Newark area, you can make your donations at the village Co-op.

SEDGEBROOK SOCIAL CLUB REGULAR DATES FOR YOUR DIARY

Rainbows Mondays 5.00pm (There is currently no Brownies due to lack of numbers)

Grantham Canine Assoc Tuesdays 7.30 – 8.30pm

Knit and Natter Tuesdays 2.00pm-4.00pm

Ruff Diamonds Dog Training Wednesdays 6.00pm

Pilates with Alice Thursdays 7.30pm-8.30pm

Club Bar Open to members Fridays 6.00pm-11.00pm

Club Bar Open to members Sundays 1.00pm-4.00pm

Membership fee for 2026 is £15 per person (under 18s free) We are always looking for new committee members, if you are able to help, please get in touch. The club and bar are available for hire for private parties, social gatherings and regular events. Please contact Sue McGreevy on 07952 205599 or email Sedgebrooksocialclub@hotmail.co.uk.



Speedwell Carpet Cleaning

www.speedwellnewark.co.uk

- Safe and Non-toxic solutions.
- Rapid Drying Times.
- Dry and Low Moisture Cleaning.
- Domestic and Commercial Service.
- Upholstery Cleaning.
- Leather Clean and Protect.
- FREE Visit and written Quotation.

*Tony is brilliant!
really good work, the
best in the business.
Phil Staples.*

*I have used Speedwell for about 8
years. Thorough, efficient and
great value for money. I would
highly recommend.
J. Johnstone.*

118 Fosse Road
Farndon
Newark-on-Trent
NG24 3TJ

Call Tony On...

01636 703002

ST LAWRENCE, SEDGEBROOK NEWS FROM THE PEWS

Church and Museum open daily 10am-4pm

Free Church Guide

Heritage Group meets bi-monthly 4th Sunday in the Social Club 3pm

Community Library and Jigsaws, Recycling for aluminium cans and ink cartridges

Grantham Food Bank collecting point

Children's Corner

Teddy Bear's Picnic Children's Book set in St Lawrence Church

The church is open every day to give everyone the opportunity to enjoy the museum, children's corner, books and jigsaws, the recycling of cans and ink cartridges, the food bank collecting point, and the opportunity for a peaceful space and private prayer.

AFTERNOON TEAS 2026

The very popular afternoon teas resumed in May in the Social Club from 2pm-4pm. If anyone likes to bake a cake they are most welcome. Here are the dates for your diaries: July 30th, August 27th, September 24th.

200 Club for the maintenance of the church and cemeteries. This year the 200 Club is to help the church continue in the village. If you wish to renew your membership and/or existing numbers they are still £12 per year with a first prize each month of £30, second prize £20 and third prize £10.

The bank account details for payment are St Lawrence Church sort code 20-63-28 account no 03579743. Please remember to reference this with your name so we know who has paid. You can also pay direct to our collectors by cash or cheque. Payment can also be made direct to Alan Cook if you miss our collectors. Please let Alan Cook know on 07963553835 or email alpaco47@aol.com if you use this method. There are spare numbers available if you want to change or add new ones or if you don't currently take part. Winners are announced on the noticeboard each month.

Here is the QR code for the Parish Giving Scheme. It can be used for one off payments or setting up regular donations. Once scanned it will take you through the 3 steps to enable a donation to be made.



LONG BENNINGTON BOWLS CLUB

WELCOMES NEW MEMBERS

Fancy trying lawn bowls or just looking for a friendly place to meet people and socialise?

Come along and see what we're about.

The green is open from mid-April to mid-September

We look forward to seeing you.

CALL 07736 311 854 FOR MORE INFORMATION OR VISIT LONGBENNINGTONBOWLSCLUB.CO.UK

KEITH SELL

Plumbing & Heating Engineers Ltd

www.keithsell.co.uk - keithsellplumb@yahoo.co.uk

A Professional Service For All Your Requirements
Gas & Oil Installation & Servicing
Underfloor Heating
Pressurised Unvented Hot Water Systems
Energy Efficient Installation
Bathroom Design & Installation



Tel/Fax: 01636 706607 Mobile: 07976 429654
Grange Lane, Cotham NG23 5JZ

CaSSOA
THE CARAVAN STORAGE
SITE OWNERS' ASSOCIATION



Est. 2000

GOLD AWARD

Three Shires Caravan Storage Ltd

Long Bennington NG23 5EX

Secure Site, Generous Opening Hours

Family run business

Valerie & Sally Richardson

01400 281549

Mobile: 07799 564992

Waymark Genealogy
Family History Research Services

www.waymarkgenealogy.co.uk

A full range of genealogy services

- Family trees & histories researched
- Archive, library & cemetery research visits
- Genealogical problem solving & fact checking
- Genealogical analysis of DNA results
- First World War and 19th Century military research
- Photographic scanning

Based in Long Bennington

Lorraine Johnson

07554 167 494

lajohnson@waymarkgenealogy.co.uk



THE SAXONWELL GROUP MINISTRY TEAM

West Loveden Minister Rev Jon Speirs-Davies Jon.sd@lincoln.anglican.org
Tel: 07766 486452
Lay Reader Jenny Stuart jenny.stuart@outlook.com 01949 842231
Retired Priest Rev. Stella Langdon-Davies
Authorised Lay Ministers Sylvia Andrews, Joy Jordan and Colin Sedgewick
Administrator Davina Tyler lovedenwest@gmail.com

CHURCH CONTACTS

St Swithun's, Long Bennington
Church Warden Bridget Rosewell 07836 215181
Treasurer Jane Cowley 01400 282691
Church Flowers Beryl Holmes 01400 281437
Safeguarding Officer Eileen Ross 07710 534732

St Peter's Foston
Church Warden/Treasurer Andrew Blanchard 01476 978664/ 07590652657
Safeguarding Officer Eileen Ross 07710 534732

Holy Trinity Allington
Church Warden Chris Dicken 01400 281524
Treasurer Bob McKinlay 01400 281671
Safeguarding Officer Marian Hubbard 01400 281496
Flowers Jill Storer/Linda Rycroft 283542/281516

St Lawrence Sedgebrook
Church Warden Alan Cook 07963553835
Safeguarding Officer Wendy Fowler wendyfowler@btinternet.com
mob. 07747022272.

Treasurer Ian McKay 01949 843691
Flowers Geraldine Statham glendogs@aol.com

Long Bennington Methodist Chapel
Steward Eileen Eggleston 07531 160197
Treasurer Kathryn Wood 01400 281489

COMMUNITY CONTACTS

Parish Council Clerks
Martin Wright (L. Bennington) parishclerk@longbenningtonparishcouncil.org
Mon 10:30-12:30 at Village Hall Tel:01400 282716
James Stanley (Foston) clerk@fostonpc-lincs.org 01522 889737
Kate Griffin (Allington) 6 Sedgebrook Road, Allington
Dermot Daly (Sedgebrook) clerk@sedgebrook-pc.gov.uk 01476 577175
Ted Bates (Chair) Long Bennington Charities 01400 281853

Continued...

Village Halls: Booking Secretaries

Allington— Heather Mould Bookings- bookings.allingtonvillagehall@gmail.com
Foston— Pam Fellows -07740 894605 email fostonvillagehall2023@gmail.com
or Richard Wynn 07579 779087 email fostonvillagehall2023@gmail.com
Long Bennington—bookings@longbenningtonvillagehall.org—07816 267927
Sedgebrook—Sue McGreevy on 07952 205599

Other Useful Contacts

Long Bennington Medical Centre- 01400 281220
Long Bennington book group—Moire Barnabas - 01400 283313
Long Bennington & Local Villages Rotary Group SecretaryLBR@outlook.com
Long Bennington Girl Guides—Mon 7pm-8.30pm—www.girlguiding.org.uk
1st Foston Brownies Thursdays - 6.30pm - 1stfostonbrownies20@gmail.com
Village Hall
Rainbows Thursdays - 5-6pm 1stfostonrainbows20@gmail.com—Village Hall
Scout Group Gorrie Hall, Chapel Lane, Foston
Beaver Scouts Mondays- 6:30-7:30pm Adam Lashbrook
foston.beavers@gmail.com
Club Scouts Wednesdays—6:30-8pm—Claire Collier 01636 626097
Scouts Thursdays—7-9pm—Les Romans 01400 281217
Explorer Scouts -Mondays—7:45-9:30pm—Jenny Wyn 01400 282301

Women's Institute: (each meet monthly in their local village hall)

Allington—1st Wed 7:45pm—Margaret Dicken— 01400 281524
Foston—2nd Tuesday 7:30pm—Carole Chandler-Barratt- 07767 657745Long
Bennington—1st Tuesday 7:30pm—Jan Leventhall on 07803892118 or email
janleventhall@me.com

LB Playing Fields: Booking Manager—Gemma Walker—07946 176034
Management Committee—Mike Manley—01400 282731
Long Bennington Toddler Group—Becca Thirtle—07545 491267
Long Bennington [Pre-School—longbenningtonpreschool@googlemail.com](mailto:longbenningtonpreschool@googlemail.com) 07816
537242
Bowls Club—Peter Fordham—07701059943 email nettyfordham@gmail.com
Friendship Group—Nicola Thorpe—07904 182752
Tea n Chat -Jane Taylor - 01400 282480
Junior Football Club—Steve Rowley—07909 857441
Twinning Association—Margaret Butcher – 07484140914
Village Produce Association—Bev Gledhill— 07753 709513
Writing Group—Shirley Lynn—07726 334280
LB Rotary Club- hello@lbrotary.co.uk
Foston Neighbours - 07422 881448 fostonneighbours@gmail.com



*Largest Medicine
Stockholding in
Newark*

WHISTLERS PHARMACY

YOUR LOCAL INDEPENDENT COMMUNITY PHARMACY

**FREE DAILY HOME DELIVERY SERVICE
To Long Bennington, Claypole and
All Surrounding Areas**



**YOUR PRESCRIPTION READY FOR
COLLECTION OR DELIVERY WITHIN 48 HOURS
OF RECEIPT FROM YOUR SURGERY**

**MONDAY TO FRIDAY
8AM TO 5:30PM**

**SATURDAY
8AM TO 1PM**

Tel: 01636 703756

Beaumont Chambers • 1 London Road • Newark • NG24 1TN

Your Local Pet Food Supplier



Gablestock is a family owned feedmill and farm. We produce feeds for livestock, horses and even the family pet. 75% of what Gablestock sell is manufactured on site using our own farm to provide home grown cereals and pulses.

We have been UFAS and FABBL registered for the past 10 years, with all other ingredients coming from approved sources, which are fully traceable. We pride ourselves in using good wholesome raw materials – producing high quality feeds. We



are open to the public and trade so why not call in and see our great range of animal feed all at great prices.

- Wild bird seed specialists
- Ideal for small holders, market traders and hobby farmers

Open
Monday to Friday 7-5pm
Saturday 8-4.30pm
Large Car Park



Gablestock

ANIMAL FEEDS



Gablestock Ltd, Witham Mill, Valley Lane, Long Bennington, Newark Notts NG23 5EE

Tel: 01400 281421 Fax: 01400 281851

www.gablestock.co.uk



B Benningtons

Our recent successes
in Long Bennington



AMBER MORRALL
Sales Negotiator



STUART RICHARDS
Director



LAURA NIGHTINGALE
Lettings & Admin

01400 221100

sales@benningtons.co.uk